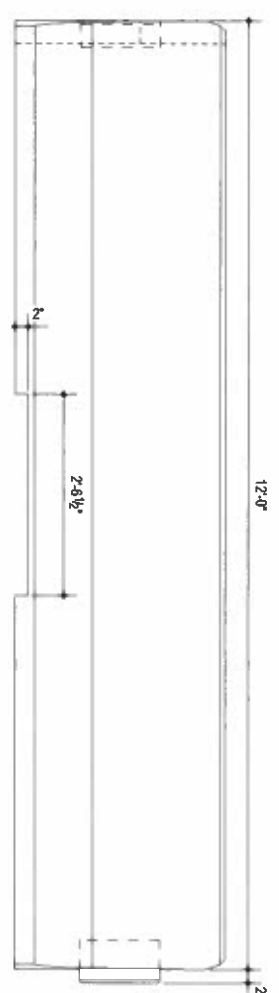
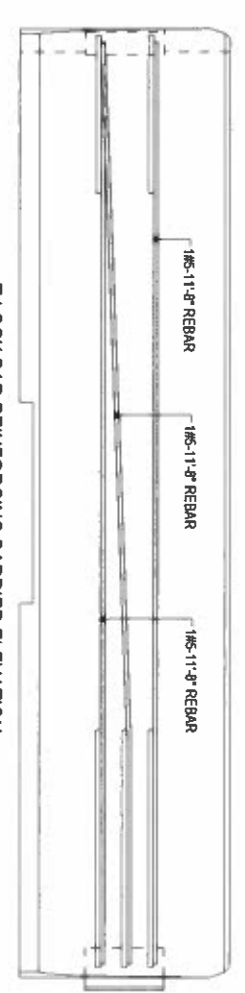


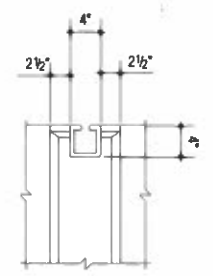
T-LOCK BARRIER PLAN VIEW



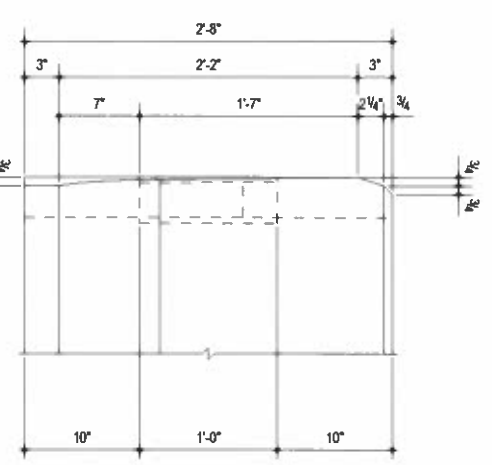
T-LOCK BARRIER ELEVATION



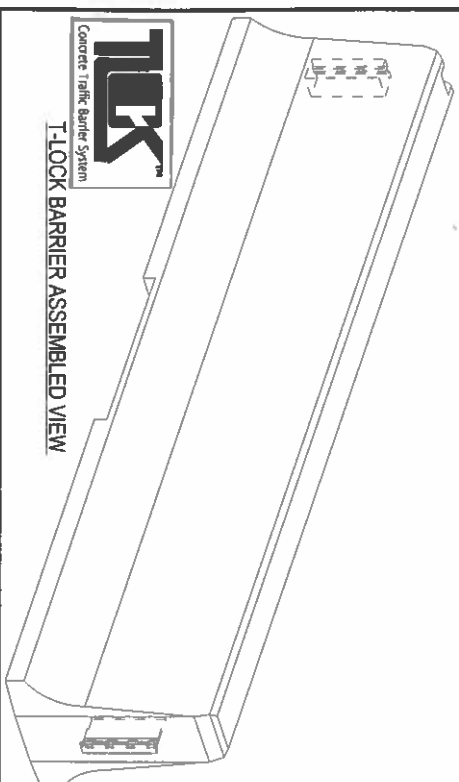
T-LOCK BAR REINFORCING BARRIER ELEVATION



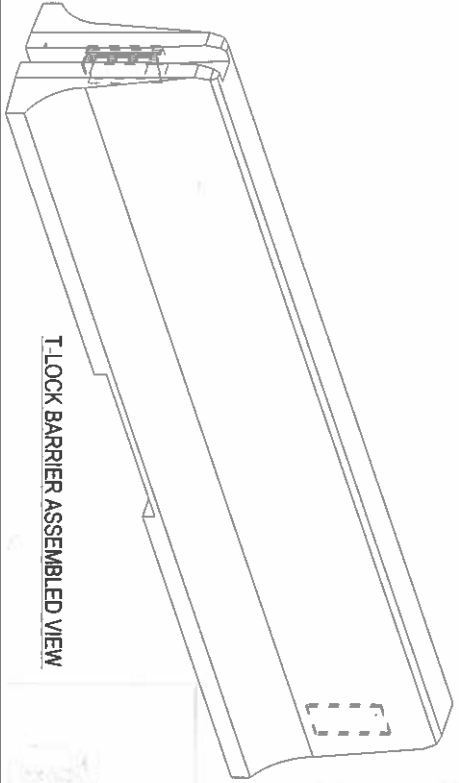
DETAIL #A



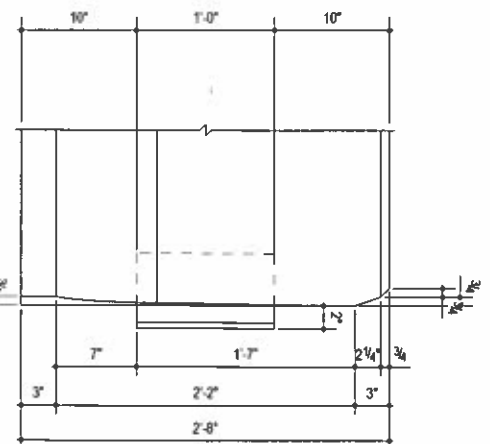
END OF BARRIER ELEVATION



T-LOCK BARRIER ASSEMBLED VIEW



T-LOCK BARRIER ASSEMBLED VIEW



END OF BARRIER ELEVATION

GENERAL NOTE:

- 1) MINIMUM COMPRESSIVE STRENGTH OF CONCRETE AT THE AGE OF 28 DAYS (FC) SHALL BE 4,000 PSI
- 2) ALL REINFORCEMENT SHALL CONFORM TO ASTM 615, GRADE 60, UNCO.
- 3) UNITS MAY BE CAST FROM 12 TO 20 FEET LENGTH IN TWO FOOT INCREMENTS. ENDSTITCH LENGTH OF THE LONGITUDINAL BARS AS NECESSARY TO MAINTAIN THE LOCATION OF THE CONNECTIONS.
- 4) TEMPORARY CONCRETE BARRIER SHALL BE MANUFACTURED TO THE MYSDOT SPECIFICATIONS TMA-05 PRECAST CONCRETE BARRIER.
- 5) ALL WELDING SHALL MEET THE REQUIREMENTS OF THE A.S.T.E.E.L. CONSTRUCTION MANUAL, USING AN APPROVED WELDING PROCEDURE SPECIFICATION PERFORMED BY A QUALIFIED WELDER IN ACCORDANCE WITH SECTION 8.
- 6) WHEN INSTALLING BARRIERS, CONNECT AND PULL BARRIERS INTO TENSION SO THERE IS NO SLACK BETWEEN CONNECTION.
- 7) TOLERANCES: ALL DIMENSIONAL SIZES OF CONNECTIONS WILL BE REBAR BEING WELDED ON TO "TUBE" AND "T" PLATE +/- 1/8"
- 8) REFER TO: TEXAS TRANSPORTATION INSTITUTE DOCUMENT: REPORT NO. 400001 - RRC-4 REPORT DATE: JULY 2009 TEST DATE: MAY 5 2009



3584 Alhina Road • Muskegon, Michigan 49444
 Phone: (231) 733-1904 Fax: (231) 733-2519
 (800) 866-2874 800 (TOD) BUSH
 www.bushconcreteproducts.com